

August 2015

IN THIS ISSUE:

[Poker for PAC/ Summer Social](#)

[Calendar of Events](#)

[New Members](#)

[Family Day at the Rays](#)

[EER Survey](#)

[Engineer's Breakfast](#)

[BOMI Classes](#)

[Annual TOBY Awards](#)

[Member Spotlight](#)

PRESIDENT'S ADDRESS



It is with great sadness that I announce the untimely death of Michael Wolfe, a longtime member and dear friend of BOMA Greater Tampa Bay. At the age of 48, Michael suffered a massive heart attack on Sunday, August 2nd and passed away in his home. He is survived by his wife Lisa, son Steven and grandson Aidyn and granddaughter Willow.

Michael was a permanent fixture at all BOMA luncheons and events; he could be seen smiling at all members and greeting all visitors and sometimes yelling at vendors when they got out of hand. He truly lived BOMA all the time.

As a friend, we all knew the love he had for everyone, always there to lend a helping hand. Skydiving and his family were his life passions and he truly lived his life passionately. Michael was one of the good guys and this loss has left a void in everyone who knew him.

In this devastating time, we have also learned that Michael left with no life insurance. A very dear friend, Rob Emmerson, has set up a memorial fund to assist Lisa with the financial strain this has added to an already life changing time. Please, if you are able, visit the site and make a donation, any dollar amount helps. This fund can be visited at <http://gogetfunding.com/michael-wolfe-memorial-fund/>.

At this time we do not have any information on Michael's Memorial Services, but once we do we will be sure to pass it along to his BOMA family. Please keep the Wolfe family in your thoughts and prayers as they certainly need them right now. And to our dear friend Michael, we wish you Blue Skies and all our love.

Special Thanks to our 2015 Annual Sponsors

PLATINUM



Experience better.™



Tampa Bay Trane



Automatic Fire Sprinklers, Inc.

GOLD



EXPERTS IN FALL PROTECTION



SILVER

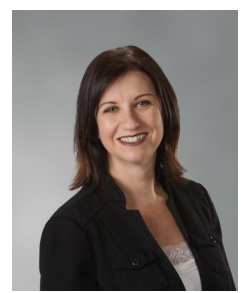


Sara Wayson, RPA, CPM

DTZ

2015 Vice President

BOMA Greater Tampa Bay



POKER FOR PAC & SUMMER SOCIAL

TEXAS HOLD'EM TOURNAMENT

FOR NON POKER PLAYERS

Wednesday, August 26, 2015

Registration opens at 4:30pm

Tournament begins at 5:30pm

open for all, casual fun,

cheat sheets are available for beginners

come and see if you can beat our last year's

winner Dawn Forestt who was also a beginner!

**All proceeds benefit our
BOMA International PAC Funds**



[Sign up here to attend or sponsor online](#)

or find out more about available sponsorships [here](#)

2015 Calendar

Mark your calendars for the following upcoming events and deadlines

Committee Day

3rd Tuesday of each month

Luncheons

4th Wednesday of each month

August 26th

Poker for Pac

November 12th

TOBY Awards Dinner

BOMA International and BOMA Florida Events & Conferences

June 28th - 30th

Every Building Conference & Expo
Los Angeles, CA

October 9th

BOMA Florida Board Meeting
Clearwater, FL

For more information and to register for BOMA GTB events please [click here](#).

No credit issued for cancellations after 12:00 PM Friday, prior to any event

Thank you to our High Roller Sponsors



WELCOME NEW MEMBERS

Vickie Riney - B&L Management

Brittany Wilson - CB Richard Ellis

Fateh Singh - Crown Builders & Realtors

Alieze Austin - Tower Realty Partners

Anne Slaughter - USSI Clean

2015 EER SURVEY NOW AVAILABLE!



The Data You Need to Succeed

Want to maximize asset performance and stay current with the latest trends in the commercial real estate marketplace? Subscribe to BOMA International's 2015 Experience Exchange Reports, which offer the essential data and analysis you need to succeed in the office and industrial sectors.

For nearly a century, BOMA's Office Experience Exchange Report (**Office EER**) has been the industry's most trusted benchmarking resource for office buildings. This year, the database has expanded to also include benchmarking information for industrial properties with the new Industrial Experience Exchange Report (**Industrial EER**). Both reports offer accurate and comprehensive income and expense data to help you evaluate and refine operational strategies, build better budgets, assess new markets and identify opportunities for cost savings that can



[Click here](#)

to like us on Facebook.

drive a more profitable bottom line for your asset.

Your competitors already rely on the data found in BOMA's Experience Exchange Report database to gain a competitive advantage. Shouldn't you, too?

EER subscriptions are valid until the release of the next year's EER, which generally occurs in June. For example, if you subscribe to the EER in July of 2015, you will have access until June of 2016. If you subscribe in February of 2016, you will also have access until June of 2016.

To purchase or learn more, please visit <https://eer.boma.org/Boma/>

"FAMILY DAY AT THE RAYS!"

SUPPORTING



Saturday, 8/29, 6:10 pm vs Kansas City Royals

WHO IS REAL ESTATE LIVES? Real Estate Lives is a 501(c)(3) organization serving the Tampa Bay area that aims to help unemployed and underemployed real estate professionals and those affected by the down turn in the real estate industry. We seek to provide support throughout the job seeking process by offering emotional support, industry training, networking opportunities, and a specialized online job board.



CREW TAMPA BAY
A chapter of CREW NETWORK



— The Bergstrom Council —

- What:** Tampa Bay Rays vs. Kansas City Royals
- When:** Saturday, August 29, 2015, 6:10 pm game time
- Where:** Tropicana Field (tickets will be given out at 5:00 pm)
- Tickets:** \$25/pp (with \$5/ticket going to REL)
- Who:** All Tampa Bay commercial real estate professionals, their friends, their families, and their clients who want to network, watch the Rays, and support Real Estate Lives

LIMITED TICKETS AVAILABLE SO PURCHASE YOURS TODAY!

Purchase tickets (non-refundable) on the upcoming meetings page at www.reictampabay.org. Call Sherry Smith, REIC Association Manager, at 813-205-2138 with any questions.

[Buy your Rays tickets here!](#)

ENERGY CONSERVATION PANEL ENGINEER'S BREAKFAST

Wednesday, September 2nd

7:30 am - 9:00 am
Suntrust Financial Centre
401 E. Jackson Street
Tampa, FL 33602

Guest Speakers:

Susan Fitzgerald, TECO Energy
- Energy Audits

Carl Lawson, D. C. Herrmann & Associates
- Benefits of Building Commissioning

Donald Herrmann, D. C. Herrmann & Associates
- U.S. EPA Portfolio Manager 2015 Mid-Year Enhancements

Event Sponsor



[Register here!](#)

Guests, non-building engineers, property managers, and Allies' will be asked to register at the \$10 fee.

No refunds for cancellations after
12pm Friday, prior to the event.

**BOMI INSTITUTE CLASSES 2015
FEDERATED WITH BOMA INTERNATIONAL**

BOMI RPA, FMA and SMA/SMT Designation Classes

The Real Property Administrator (RPA) designation program serves the educational needs of both third-party property managers and corporate property managers.

The Facilities Management Administrator (FMA) designation program benefits new and experienced facilities professionals alike with in-depth topics.

Designed to meet the needs of hands-on technicians and building engineers, the Systems Maintenance Administrator (SMA) designation program offers instruction in technologies and trends in the maintenance field.

The Systems Maintenance Technician (SMT) designation program helps you increase the operating effectiveness of your building and makes you more valuable to your organization.

- July 27th - 29th Law and Risk Management (RPA)

- October 19th - 21st Asset Management (RPA, FMA)

- November 13th Ethics (RPA, FMA)

Accelerated Class Fee \$1,100 plus testing fee for BOMA Members.

[Click here](#) for more information.



2015 ANNUAL TOBY AWARDS

Thursday, November 12th, 2015 - 6:00 to 10:00 pm
The Floridan Palace, 905 N. Florida Ave. Tampa, FL 33602
www.floridanpalace.com \$125/Ticket - [Buy yours here!](#)

Sponsorships now open - [click here for more information](#)

Presenting Sponsor



Gold Sponsors



[Click here to see our 2014 Winners!](#)

